



QUEEN'S  
UNIVERSITY  
BELFAST



**Gillian Riddell**

Technician Commitment

Manager



# What is a Technician?

“ A person who is skilled in the use of particular techniques and procedures to solve practical problems, often in ways that require considerable ingenuity and creativity.

Technicians typically work with complex instruments and equipment, and require specialised training, as well as considerable practical experience, in order to do their job effectively.”

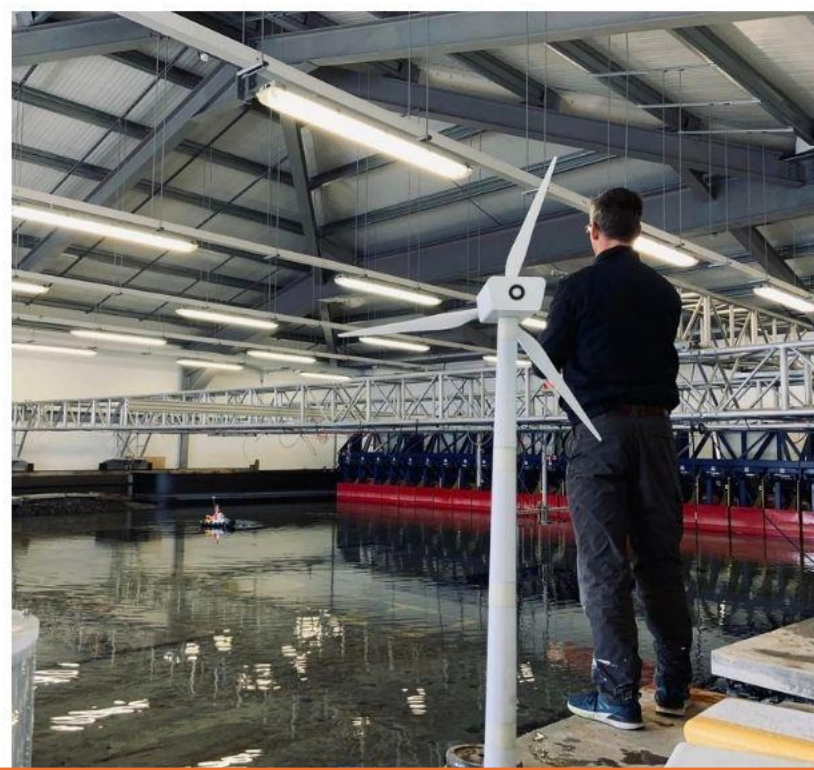
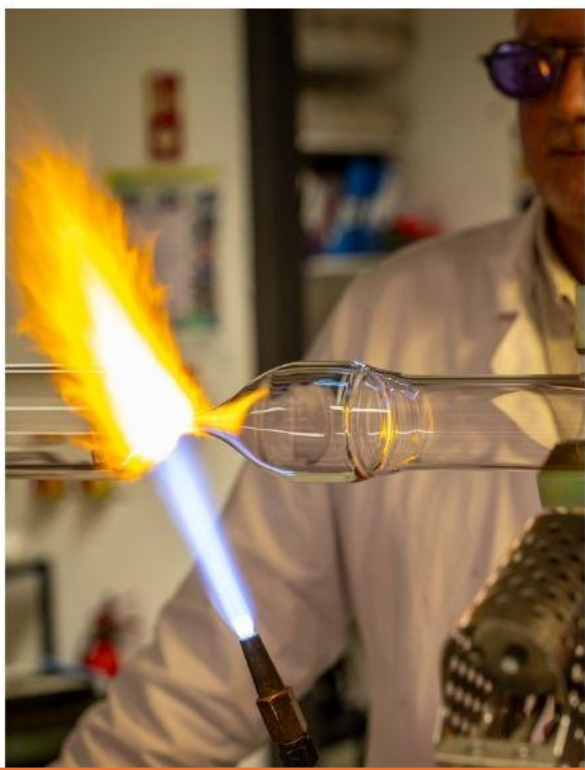
*Barley and Orr (1997): 12-15; OECD (2002): 92-94; Technician Council (2011) as cited in Lewis and Gospel (2011)*

“ Technicians use their technical expertise and knowledge and their practical, analytical and management skills to make a range of vital contributions to research and innovation, including (but not limited to):

- Delivering the goals of a research and innovation project
- Maintaining and developing the environment, standards, resources, materials and facilities needed to deliver research and innovation
- Teaching others in the design, use and analysis of research techniques and methodologies
- Managing budgets, procurement and teams directly associated with research projects, equipment, instruments and research resources”



**QUEEN'S  
UNIVERSITY  
BELFAST**





# QUEEN'S UNIVERSITY BELFAST