



**QUEEN'S
UNIVERSITY
BELFAST**

FALL 2025

STUDY ABROAD AT QUEEN'S UNIVERSITY BELFAST

**RUSSELL
GROUP**

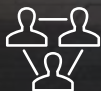


**SHAPING
A BETTER
WORLD
SINCE 1845**



WE'RE A RUSSELL GROUP UNIVERSITY

This means you'll be taught by world-leading academics and that your course content will be informed by the latest research, making it as relevant as it can be.



WE'RE IN THE UK'S BEST CITY

Queen's is based in Belfast, a buzzing capital city with the lowest student cost of living in the UK (Mercer Cost of Living City Ranking 2023).
What could be better?



YOU'LL FIND A PLACE TO BELONG

With over 200 student-led clubs and societies on campus, you are sure to find your tribe.

Welcome from Pro-Vice-Chancellor for Global Engagement

Thank you for choosing to come to Queen's University Belfast for your study abroad experience. At Queen's, we are proud to be a university that is internationally recognised and globally connected.

By coming to study at Queen's, you will be joining a member of the Russell Group of UK research-intensive universities (equivalent to the Ivy League), and a university with 15 subjects ranked in the top hundreds of in the world (QS World Rankings 2023).

Two hundred international students come to Queen's each year to study abroad for a semester or an academic year, and to experience a world-class education in a thriving city. Queen's is at the social and cultural heart of Belfast, which is the safest city in the region in the UK* and has the lowest cost of living**. Small enough to feel like home, big enough for adventure and exploration, Belfast offers global food, culture, arts and shopping, with breathtaking scenery just a short distance away.

**Belfast is in the safest region in the UK
(UK Crime Surveys 2021/22)*

***Belfast has the lowest cost of living in the UK
(Mercer Cost of Living City Ranking 2023)*

Throughout this booklet you will find useful and practical information to help support your transition from your home country to Queen's.

When you arrive on campus, you will be invited to attend Orientation programmes to coincide with the start of semester, helping you adjust to your new environment and become part of Queen's family.

Our aim is to make your study abroad experience with us enjoyable and life-changing, and to help develop your skills and employability as a future-ready leader.

We look forward to welcoming you on campus and making Queen's your home from home.

Professor Margaret Topping
Pro-Vice-Chancellor for Global Engagement



STUDY ABROAD AT QUEEN'S UNIVERSITY BELFAST

As the leading UK university on the Island of Ireland, over 300 students worldwide come to Queen's University Belfast each year to study abroad for a semester or an academic year.

WHY BELFAST?

Belfast is a vibrant city and a “Must See” European destination, with its own distinct culture and traditions. Belfast is in the safest region in the UK (UK British Crime Surveys 2021/22).



BELFAST IS ONE OF THE UK AND IRELAND'S MOST VIBRANT: PACKED WITH ENERGY, CULTURE AND HISTORY.

(COMPLETE UNIVERSITY GUIDE 2024)



BELFAST HAS THE LOWEST COST OF LIVING IN THE UK

(MERCER COST OF LIVING CITY RANKING 2023)





Awash with enthusiasm, culture and famous Irish friendliness, students can also explore:

- Game of Thrones film location and activity tours
- Beautiful scenery and outdoor adventures such as the Giant's Causeway or hiking in the Mourne Mountains
- Great entertainment and nights out; a buzzing arts and social scene from festivals, theatre and international events to historic pubs, stylish bars and shopping
- Northern Ireland is the happiest place to live in the UK (Lloyds Bank Happiness Index, 2020)
- The rest of the UK, Ireland and Europe with accessible airport and transport links to most major cities
- Belfast among the seven best UK cities for food and drink (Which?, 2023)



Choosing Queen's allows students to study at a world-class university (Ivy League equivalent), make new friends and live alongside people from all over the world.



WHY QUEEN'S?

Study abroad students at Queen's are taught by world-leading researchers and experts in their field through lectures, tutorials or practical laboratories, in state-of-the-art facilities.

We also offer opportunities beyond the classroom with internships, research classes and field trip options. Due to the unique history of Belfast, students can also gain insights into their subject(s) in a post conflict scenario, especially in areas of Politics, International Studies, History and English.

Our Campus is within walking distance of the city center as well as coastlines and epic landscapes just 1 hour away.

We understand that this is, for many students, a once in a lifetime opportunity. With this in mind, we encourage students to maximize their experience outside the classroom and offer organized field trips and excursions each weekend through student accommodation services.

qub.ac.uk/International-students



NORTHERN IRELAND IS THE HAPPIEST PLACE TO LIVE IN THE UK

(LLOYDS BANK HAPPINESS INDEX, 2020)



QUEEN'S IS HOME TO OVER 4,400 INTERNATIONAL STUDENTS FROM 90 DIFFERENT COUNTRIES

(QUEEN'S PLANNING OFFICE, 2023)



QUEEN'S IS THE NINTH OLDEST UNIVERSITY IN THE UK

(COMPLETE UNIVERSITY GUIDE 2024)



ACCOMMODATION AND ORIENTATION

All study abroad students are guaranteed accommodation at Queen's, which is located within easy walking distance of the University in a pleasant residential area (Elms BT9), or at the heart of city life (BT1 and BT2). All accommodation is self-catering with en-suite options and internet access.

Orientation programmes run in September and January to coincide with the start of semester, helping study abroad students get familiar with the new environment and support services on offer at Queen's. There is also information on adjusting to university study, living expenses and tours of the recreational facilities and city of Belfast. For more information:

qub.ac.uk/accommodation



WHAT CAN I STUDY?

Study abroad students can choose to study virtually any subject Queen's offers in:

- Arts, Humanities and Social Sciences
- Engineering and Physical Sciences
- Medical, Health and Life Sciences

Examples include:

- Architecture
- Biological Sciences
- Biomedical Science
- Conflict Transformation and Social Justice
- Ethnomusicology
- Economics
- Engineering and Computer Science
- Northern Ireland: Conflict, Identity, Peace
- Pharmaceutical Sciences
- Psychology

Interdisciplinary study is also possible dependent upon pre-requisites being met and timetabling, eg Irish Folklore/Molecular Cell Biology/Bio Chemistry.

There are also some more specialist subjects on offer at Queen's, such as, *The Politics of Deeply Divided Societies* and *Introduction to Screenwriting*.



CHOOSING WHAT TO STUDY?



Study abroad students normally take three modules per semester. Modules are usually worth 20 CATS points each (5 US Credits) and students require 60 CATS Points per semester (This equates to 15–18 US Credits or 30 ECTS credits).

Simply select the subject area of interest to see the range of modules (classes) offered. By clicking on each individual module, information on credit, content and assessment is detailed along with which semester in which it is offered.

Students can usually select modules from Level 1 and 2 without evidence of prior study. Modules at Level 3 often require demonstration of relevant study.

A list of modules in the undergraduate course catalogue is available at <https://qsiscat.qub.ac.uk>



**1 CLASS IS WORTH 20 CATS CREDITS
= 5–6 US CREDITS**

STUDENTS TAKE A TOTAL OF
3 CLASSES PER SEMESTER

Students should agree module choices with their home institution's study abroad adviser before submitting an application to ensure they are appropriate to the student's level of study and that your home university will award transfer credit.

Teaching Methods

Learning in the UK and Ireland is much more independent. The teaching of a module will usually be based on lectures, supported by tutorials or seminars, which incorporate group discussion. Students are also expected to supplement formal teaching with their own private study, with the student determining how much reading they wish to do.



HOW TO APPLY

Study abroad is open to those students currently undertaking an undergraduate degree from an accredited university. Applicants should normally have completed at least one year of university study.

Students are required to have a GPA of 3.0 overall from their current home university. Some specific subject areas chosen may require evidence of prior study and attainment.

Apply online at qub.ac.uk/studyabroad

Module choices, an academic reference and official transcripts from the home university outlining obtained grades are required for applications.

Application Deadlines

Semester 2 Spring 21 October 2024

Semester 1 Fall/Academic Year 31 May 2025

Visa Requirements

Semester Study Abroad students from North America require a Visitor Study Visa whereas those undertaking a full academic year require a Student Visa Route (formerly Tier 4 Visa). Queen's will provide the required documentation to successful study abroad applicants for their visa application.



QUEEN'S LOYALTY SCHOLARSHIP

Study Abroad students who return to Queen's to complete a full-time undergraduate or postgraduate degree are also eligible for

**20% TUITION FEE DISCOUNT
IN YEAR 1**

WHAT ARE THE COSTS?*

STUDY ABROAD FEES 2025	£	US\$**	CAN\$**
One Semester/Term	8,300	10,209	14,425
1 Academic Year	16,600	20,418	28,851
ACCOMMODATION COSTS 2025			
Non-catered accommodation	110 per week	135 per week	191 per week
Non-catered accommodation with ensuite bathroom (BT1/2)	160 per week	197 per week	278 per week
Non-catered accommodation with ensuite bathroom (BT9)	150 per week	185 per week	261 per week
Application fee/Damage deposit	300	369	521
LIVING EXPENSES*			
Food	101 per week	130 per week	177 per week
Personal Expenses e.g. entertainment, clothes (depending on social life)	40 per week	52 per week	70 per week
Books can be borrowed from the Library for two weeks or overnight, or bought (reasonably priced University Bookshops)	10 per week	13 per week	17 per week
Local Transportation Costs Minimal, as Queen's is a campus university.	5 per week	6 per week	9 per week
Cost of a standard return coach journey to Dublin (2 hours)	18	23	31
Cost of an average return flight to London (1 hr) Based on Easyjet flight from various London airports to Belfast International fares between March/April 2022	70	90	122
Gym membership based on student off peak monthly membership – payable per month	24 per month	31 per month	42 per month
Student Cinema Ticket with Queen's Film Theatre	5	6	8

*Living expenses are indicative and program costs including fees vary subject to arrangements with individual partner institutions

**All fees are payable in £ sterling. An approximate estimation is shown at the following exchange rate (November 2024):

£1 = \$1.23 USD and \$1.74 CAN. Prices quoted are correct at time of print (November 2024)



I came to Belfast looking to escape the well-trodden path of the London, Paris, or Berlin study abroad experience on which many of my peers were embarking. I wanted to be in a place that would deepen my understanding of my Politics degree – a place that would bring the theory I learned into sharper and more personal focus. I found that in Belfast. I rarely feel like a tourist, and easily engage in the messy and personal politics that mean so much in this transitioning city.

I've been welcomed by both residents of Belfast and by Queen's students. Being at Queen's has allowed me to be more in control of my education. As a politics student, I am given the space to do better and more meaningful work both at Queen's and as a person living in Belfast.

Emma Paul
Oberlin College, Ohio



**QUEEN'S RANKED
4TH IN THE WORLD FOR
INTERNATIONAL OUTLOOK**

(TIMES HIGHER EDUCATION WORLD
UNIVERSITY RANKINGS 2024)



**15 QUEEN'S SUBJECTS IN
THE TOP 200 IN THE WORLD**

(QS WORLD RANKINGS BY SUBJECT 2023)



THE FACULTY OF
**ARTS, HUMANITIES
AND SOCIAL
SCIENCES**



GAIN A NEW PERSPECTIVE STUDYING ARTS, HUMANITIES AND SOCIAL SCIENCES AT QUEEN'S



The Faculty of Arts, Humanities and Social Sciences at Queen's is a busy, multidisciplinary community of learners, dedicated to using the wide range of subjects within the arts and humanities to make a difference to the lives of ordinary people, locally nationally and internationally.

We are home to some 9,300 students and 700 academic and support staff who work across five Schools:

- Arts, English and Languages
- History, Anthropology, Philosophy and Politics
- Law
- Queen's Business School'
- Social Sciences, Education and Social Work

We also house a Global Research Institute, the Senator George J Mitchell Institute for Global Peace, Security and Justice.

For Arts, Humanities and Social Science specific queries, please contact The Study Abroad Recruitment Officer: AHSSabroad@qub.ac.uk



RANKED 202 IN THE WORLD
(QS WORLD UNIVERSITY RANKINGS 2024)



RANKED 27TH IN THE UK.
23 SUBJECTS IN THE UK TOP 20.
13 SUBJECTS IN THE TOP 10
(COMPLETE UNIVERSITY GUIDE 2024)



14 QUEEN'S SUBJECTS IN THE UK TOP 20.
7 SUBJECTS IN THE UK TOP 10
(GUARDIAN UNIVERSITY GUIDE 2024)



RANKED 10TH IN THE UK FOR GRADUATE PROSPECTS
(TIMES AND SUNDAY TIMES GOOD UNIVERSITY GUIDE 2024)

RESEARCH OPPORTUNITIES

Independent Research Module

Students have the option to undertake a piece of independent research within the faculty of Arts, Humanities and Social Science, worth 20 CATS points.

Students will discuss and agree a suitable research topic with the nominated Queen's supervisor, and also their supervisor at their home institution if required.

Students may complement this independent research with any two additional modules from across the university.

For more information on Study Abroad Internships and Research opportunities: AHSSabroad@qub.ac.uk



CONFLICT, RELIGION AND IDENTITY

Since 9/11, politicians, media commentators, and scholars from across all disciplines have been struggling to comprehend the ‘return of religion’ evidenced by the unprecedented growth of radical expressions of Islam, Christianity, and Judaism. The global rise of radical religion has become arguably the most pressing – yet least understood – social, political, and security problem of the contemporary period.

Northern Ireland has witnessed the interface of religion, political identity and conflict throughout ‘the Troubles’ of the 20th century and, as a result, Queen’s University is home to some of the most innovative and interdisciplinary thinking on conflict transformation. We offer students the opportunity to study conflict, religion and identity through the lens of anthropology, history, sociology and politics, allowing accepted wisdom on these issues to be challenged from a variety of perspectives.

SAMPLE PATHWAY

Semester One: Fall

Level 1

ANT1006 Understanding Northern Ireland: History, Politics and Anthropology

This module provides an overview of the history and politics of the state of Northern Ireland, using anthropological understandings of ethnicity and nationalism to examine how Unionism and Irish Nationalism developed.

+

Level 2

PAI2065 Peace and Conflict Studies

This module introduces you to the study of civil wars and the fields of conflict analysis and peace studies, in the study of the outbreak, development and resolution of armed civil conflicts.

+

Level 2

PAI2011 The Politics of Deeply Divided Societies

Explore the study of the politics of deeply divided societies such as Northern Ireland, South Africa under Apartheid and the Israeli-Palestinian conflict, with an examination of ethnic and national conflict in terms of global politics.

= TOTAL 15–18 US CREDITS



INTERNATIONAL RELATIONS

Queen's has always been strongly international in character and today a large proportion of our graduate students, a good proportion of our undergraduates, as well as many members of the faculty are drawn from Europe, North America and further afield. Our aim is to offer students a broad range of options including major theoretical perspectives on International Relations, the study of conflict as well as peace building, the work of the major international institutions, and the major regions of the world from Europe to the Middle East.

Queen's University is known as a world-leading center for the study of political violence, security studies and conflict transformation. Given the unique history of conflict and reconciliation in Northern Ireland, researchers at Queen's are well placed to offer a unique perspective on many of today's difficult research challenges, both in Ireland and across the globe.

SAMPLE PATHWAY

Semester One: Fall

Level 2

PAI2001 Politics and Policy of the European Union

An introduction to the European Union, demonstrating how this evolving and expanding tier of European governance impacts on national political systems.

+

Level 2

PAI2017 International Relations

Examines the balance of power, peace, international society, norms and gender. Modern challenges, such as International Political Economy, the spread of Globalization, and contemporary concerns with security and the War on Terror are also discussed.

+

Level 3

PAI3041 Asylum and migration in a Global Politics

This module examines changes in the fields of refugee and migration studies, asking questions that assess not only shifting policy and practices but also the impacts these shifts have on the lived lives of migrants themselves.

= TOTAL 15–18 US CREDITS

BREXIT PATHWAY

Queen's was a thought leader in the Brexit negotiations. With Northern Ireland being the only part of the UK to border another European country, Queen's staff have been engaged as political advisors and negotiators on the British exit from the EU and had considerable influence and impact on the issues. These include world-renowned Professors of European politics, law and policy.



CREATIVITY, PERFORMANCE AND ART

Performing Arts at Queen's has been ranked in the top 100 in the world by the QS World University Rankings. This ranking is reflective of the unique and stimulating environment offered to creative arts students at the University. Students are taught by world-leading academic staff and practitioners in some of the most advanced facilities in Europe including the Sonic Arts Research Centre (SARC), a fully accredited Avid Training Centre for Film, the Brian Friel Theatre and the Queen's Film Theatre.

The School is host to a broad range of student societies and musical ensembles including the Tyrone Guthrie Society, which provides opportunities for students to work with professional directors.



SAMPLE PATHWAY

Semester Two: Spring

Level 1

BCP1003 Broadcast Analysis 2

Explore a range of methods and approaches used in analysing broadcasting and broadcast texts and their role in society, in cultural life, and for the individual.

+

Level 3

DRA3010 The Theatre of Brian Friel

Brian Friel was the most acclaimed playwright from Northern Ireland and one of the most internationally acclaimed playwrights of his generation. Students taking this module will learn how Friel wrote plays that proved to be popular with audiences around the world and gained such approval from leading critics and scholars.

+

Level 3

FLM3034 Cinema, Realism and Modernism

This module provides a critical understanding of the historical and formal relations between cinema, realism and the culture of modernism in the 20th Century, with reference to both the history of cinema and its creative interactions with other arts, including painting, music, literature, architecture.

= TOTAL 15-18 US CREDITS



**6TH IN THE UK FOR
CAREER PROSPECTS FOR FILM
PRODUCTION AND PHOTOGRAPHY**

(GUARDIAN UNIVERSITY GUIDE 2022)

PUBLIC HISTORY

Public History at Queen's University Belfast offers an opportunity to study how historical knowledge is produced, mediated, represented and consumed in public spaces, in a region where the past continues to resonate powerfully.

Modules on this pathway approach public history from many perspectives ranging from the local to the global. The city of Belfast offers an exciting opportunity to engage with key issues surrounding contested histories, national narratives, memory, commemoration and community history in a very real and meaningful way, and to gain first-hand understanding of the relationship between history, heritage and public audiences at a local and national level.

SAMPLE PATHWAY

Semester One: Fall

Level 1

HIS1001 History and Historians: Contested Pasts

This module examines a number of controversial historical themes. It examines a number of contemporary debates about what constitutes historical truth via close examination of a number of important case studies: the crusades; the holocaust and slavery.

It will challenge preconceptions about the nature of history, stimulate awareness of the diverse ways in which the past can be studied, and introduce students to parts of the historical enterprise that few are likely to have encountered.

+

Level 3

HIS3137 Diaspora: Irish 19th-century migration

This module investigates the making of the Irish diaspora; explores factors that led

unprecedented numbers of Irish migrants to permanently leave the country of their birth in the course of the 19th century and comparatively assesses the often challenging experiences of Irish migrants in the leading host societies of Britain, the United States and Australia.

+

Level 3

MUS3055 Politics in Popular Songs: From the French Revolution to Punk

This module looks at how music and song have functioned as vehicles for promoting political ideas or as reflectors of cultural philosophies or developments.

Themes include: The expression of democracy in the Enlightenment; Utility Songs in 19th-century revolutionary movements; American Civil Rights protest song; gender-crossing and pop as artifice.

We work closely with major cultural institutions and heritage organisations such as the Ulster Museum, Titanic Belfast, Historic Royal Palaces and the National Trust.



IRISH STUDIES

Queen's offers lively and interdisciplinary teaching programmes in Irish Studies encompassing history, politics, literature, anthropology, conflict resolution, language, folklore and archaeology.

These courses are very popular with students not only from Ireland but also Europe, the US, Canada and Japan. We provide an opportunity to explore Irish culture from a variety of viewpoints and students are given the chance to learn about a vast range of subjects and disciplines from both Irish and Northern Irish perspectives.



**3RD IN THE UK
FOR CELTIC STUDIES**
(COMPLETE UNIVERSITY GUIDE 2024)



SAMPLE PATHWAY

Semester Two: Spring

Level 1

ANT1006 Understanding Northern Ireland

The course will provide an overview of the history and politics of the state of Northern Ireland. You will study key issues relating to Northern Ireland such as nationalism, unionism and the peace process from a range of political, historical, sociological and anthropological perspectives.

+

Level 3

ENG3330 Irish Gothic

This module explores Ireland's unique contribution to the Gothic through an extraordinary range of texts that encompasses classics of the genre (such as Bram Stoker's Dracula) alongside lesser-known writers such as Gerald Griffin and James Clarence Mangan.

+

Level 3

HIS3033 That Vast Catastrophe: The Great Irish Famine

This single-semester module is concerned with one of the great climacteric episodes in modern Irish history. The demographic, economic, social and political events of the period 1845-49 will be studied in detail.

= TOTAL 15-18 US CREDITS



**1ST IRISH STUDIES
CENTRE IN THE WORLD
ESTABLISHED IN 1965**

CRIME AND JUSTICE

The study of crime and criminal justice at Queen's provides students with a fascinating insight into how local issues of political conflict, criminal and alternative justice connect to broader debates about human rights, due process and social justice. Students have the opportunity to study varying examples of, and perspectives on, policing, prisons, youth justice, transitional justice, war and political conflict, restoration and reconciliation.

Connecting the local and the global we debate what can be learned from the radical changes to the criminal justice system which have taken place in Northern Ireland since the emergence of an on-going peace process, whereby human rights re-defined policing, prisons and the youth justice system. Moving beyond the boundaries of nation states and narrow definitions of crime and justice, we consider international crime and justice, environmental harms and contemporary social issues including: migration and detention, new technologies, international terrorism and organised crime.

SAMPLE PATHWAY

Semester Two: Spring

Level 2

CRM2006 Crime and the Media

Consider questions such as; is the media a cause of crime? Does media depiction simply reflect public interests and attitudes, or help to shape them? Does media representation of 'crime' and 'criminals' impact penal and social policies?

+

Level 3

LAW3056 Contemporary Issues in British and Irish Human Rights

Explore issues that raise important and difficult questions in the UK and/or Ireland concerning the extent to which certain claims should be legally protected as human rights claims, considering issues such as prevention of terrorism and the right to freedom of expression.

+

Level 3

LAW3066 Criminology: Theory and Practice

This course offers an introduction to some of the key issues and controversies surrounding the study of crime from a social scientific perspective. Crime will be understood as a legal and social construct rather than as an unchallengeable fact, seeking to develop your interdisciplinary skills and to discover the social nature of legal regulation and the role of criminology in understanding and resolving conflict.

= TOTAL 15-18 US CREDITS



ENGLISH STUDIES

English Literature at Queen's enjoys both rich heritage and international acclaim. Ranked in the top 150 English departments worldwide (QS World University Rankings 2023), English at Queen's is esteemed for its dynamic and lively culture of critical and creative activity.

Renowned for hosting the 1960s' 'Belfast Group', a collective of writers which included poets Seamus Heaney, Michael Longley as well as playwright Stewart Parker and novelist Bernard MacLaverty, the department has refused to rest on its creative laurels. In the 1970s the University fostered the three very distinctive voices of the poets Ciarán Carson, Paul Muldoon and Medbh McGuckian. Today, the Seamus Heaney Centre is one of the leading centres for creative writing in Britain and Ireland, with a staff comprised of leading poets, screenwriters, and novelists.

Students coming to study English at Queen's can select classes from a wide range of our most popular undergraduate offerings taught by our award-winning staff and visiting scholars. Our poetry modules whether Anglo-Saxon England, contemporary Ireland or the United States complement other popular options on the Irish Gothic, Contemporary Irish and Scottish Fiction, Women's Writing and a full range of modules on English Language and linguistic study.

SAMPLE PATHWAY

Semester One: Fall

Level 1

ENG1008 Adventures in the History of Ideas

An introduction to a range of social, historical, philosophical and moral concepts that have been central to the historical emergence and current predicaments of Western culture.

+

Level 2

ENG2093 Creative Writing (Prose)

Based on your own written work, the course will look in depth at practical aspects of fiction writing – characterisation, plot construction – and at the evolution of the main prose forms and genres.

+

Level 3

ENH3008 Contemporary US Crime Fiction

Examine contemporary U.S. crime fiction since the late 1960s, looking at 'policing the city,' state violence and public corruption and an examination of the limitations of state power and the international reach of some crime fiction.

= TOTAL 15–18 US CREDITS



**TOP 200 IN THE WORLD
FOR ENGLISH LANGUAGE AND
LITERATURE**

(QS WORLD UNIVERSITY RANKINGS 2022)

BUSINESS AND MANAGEMENT

Queen's Business School is one of the top business schools in the UK and Ireland and prides itself on offering a world-class range of undergraduate and postgraduate programmes. The School is a vibrant place of learning for students as it is home to the FinTru Trading Room, the Chief Executives Club for Northern Ireland and the William J Clinton Leadership Institute.



1ST FOR GRADUATE PROSPECTS

(TIMES AND SUNDAY TIMES
GOOD UNIVERSITY GUIDE 2023)



SAMPLE PATHWAY

Semester Two: Spring

Level 1

FIN1001 Financial Institutions and Markets

Study the economic functions and workings of financial institutions and markets, and gain an understanding of the financial intermediation process.

+

Level 2

ECO2008 Introduction to Econometrics

Understanding data is at the heart of economics, and data on different processes or events is often impossible to predict with complete accuracy. However, most data variables have patterns, and econometrics is about understanding and helping to explain these patterns.

+

Level 2

MGT2018 The Digital Business

Explores the challenges and opportunities of new emerging technologies such as cloud computing, social media, the internet of things and big data.

= TOTAL 15–18 US CREDITS

LAW

Law has been taught at Queen's for over 150 years. We are proud of our long and distinguished record of achievement in both education and research. The Law programme at Queen's is ranked within the top 150 in the world (QS World University Rankings 2023), confirming its position as a leading Russell Group Law School.

We provide first class resources including our £20 million Law School, which opened in September 2016. The Law School provides numerous innovative and interactive teaching spaces, central to which is the Moot Court Room and the One Button Studio.

The School of Law offers a range of high-quality programmes which connect to our research strengths and international links, in areas such as commercial law, corporate governance, criminology, criminal justice and human rights.

Research undertaken in the School is currently shaping global and local debates within legal scholarship. We strive to ensure that this expertise informs all aspects of the educational experience of our students.



SAMPLE PATHWAY

Semester One: Fall

Level 1

LAW1020 European Constitutional Law

Study the development of the EU and with the powers of its institutions, as well as define the core constitutional principles developed by the EU Courts.

+

Level 2

LAW2040 Contract Law

Study the fundamental principles of the general law of contract; rules relating to the formation of contracts and what makes a contract different from a non-binding agreement, in addition to the transactional quality of Contract Law.

+

Level 3

LAW3090 Business and Human Rights

An overview of important issues in the interactions of business and human rights, with detailed knowledge and critical understanding of the fundamental doctrines, principles and features and regulatory politics underpinning this.

= TOTAL 15–18 US CREDITS



**TOP 150 IN THE WORLD
FOR LAW**

(QS WORLD UNIVERSITY RANKINGS 2023)



WORLD-CLASS FACILITIES



The Faculty of Arts, Humanities and Social Sciences at Queen's is an intellectual powerhouse spanning traditional humanities and social science subjects to innovative and cutting-edge areas in Creative Arts and applied professional studies.

Our staff and students benefit from world-class facilities, which enhance learning and provide an immersive environment for students across the Faculty.

My experience with the SARC at Queen's was unforgettable. I left the programme with a plethora of music technology tools which I use frequently upon my return home. I can't thank them enough for my invaluable experience!

Isaac Wellish
Lehigh University, Pennsylvania

MANAGEMENT AND FINANCE

FinTrU Trading Room

Our Trading Room provides an interactive and exciting learning environment which brings textbook theory to life. Students have access to the Bloomberg professional service, market leader in financial data, news and analytics, and to Oxyor, a trading simulation, which puts them in a dealing room hot seat!



DRAMA

Brian Friel Theatre

Superb 120 seat studio theatre, including rehearsal room, dressing rooms, green room and workshop.



POETRY

Seamus Heaney Centre

The Seamus Heaney Centre is named after the late Seamus Heaney, recipient of the 1995 Nobel Prize in Literature, and alumnus of English at Queen's. The Heaney Centre is the first center of excellence for poetry in Ireland, providing resources for emerging poets and critics, and hosts a number of high profile public events throughout the year which students are encouraged to attend.



SONIC ARTS RESEARCH CENTRE (SARC)

Sonic Laboratory

SARC is an established center of excellence dedicated to the research of music technology. Its centerpiece the Sonic Laboratory is a unique space for cutting-edge initiatives in the creation and delivery of music and audio. With over 48 loudspeakers it provides a unique and exciting listening experience, the auditory equivalent of an IMAX cinema.



FILM

The Film Studio and Queen's Film Theatre

Our film studio is an exciting new facility that boasts a broadcast approved LED lighting system with custom made Doughty hoists.

The QFT is a functioning two screen cinema, which is open to the public. Many students also play an active role in the running of the QFT!



LAW

Law Building and Moot Court

Our £20 million Law School building opened in September 2016, and the space provides numerous innovative and interactive teaching spaces, including our Moot Court Room and One Button Studio.

MEET OUR STAFF

The Faculty of Arts, Humanities and Social Sciences is a busy, multidisciplinary community of learners, dedicated to using the wide range of subjects on the arts and humanities to make a difference in lives locally, nationally and internationally. We are home to some 7,600 students and 700 academic and support staff.

Professor Dominic Bryan

Dr Bryan has developed a research agenda exploring rituals, symbols and memory as they influence identity and social space in Ireland. Much of his early research focused upon Orange Order parades in Northern Ireland, but now covers a much broader range of rituals and activities including St Patrick's Day, The Lord Mayor's Show and Carnival in Belfast. In addition Dr Bryan has a major four year project looking at the popular flying of flags in Northern Ireland.



Dr Heather Johnson


When Dr Heather Johnson watches television pictures showing boatloads of desperate migrants on the Mediterranean, she is more than a concerned observer. Dr Johnson's research, at its core, is about the journeys of migration and the ways people contest and move through the structures of security and citizenship. She focuses on irregular migration and asylum seekers, how migration is represented in visual media, and the resistance, solidarity and protests of non-citizens.




Dr Cheryl Lawther

Dr Cheryl Lawther is a Reader in School of Law and a Fellow of the Senator George J. Mitchell Institute for Global Peace, Security and Justice. Her research interests are in the fields of transitional justice, truth recovery, victims, ex-combatants, reparations and the use of sites of atrocity post conflict. Funded by UK Research and Innovation, Cheryl has conducted comparative transitional justice projects in Colombia, Cambodia, Guatemala, Peru, Nepal, Uganda and Northern Ireland.





THE FACULTY OF
ENGINEERING
AND PHYSICAL
SCIENCES



ENGINEERING AND PHYSICAL SCIENCES AT QUEEN'S

The Faculty of Engineering and Physical Sciences spans disciplines that impact on lives today and will shape our future.



We are home to some 7,600 students and 400 academic and support staff who work across six Schools:

- **Chemistry and Chemical Engineering**
- **Electronics, Electrical Engineering and Computer Science**
- **Mathematics and Physics**
- **Mechanical and Aerospace Engineering**
- **Natural and Built Environment**
- **Psychology**

Our students and academics are working together to build the bridges, develop the medicines and create the infrastructure that will make the world a better, safer and more sustainable place.

As one of the most diverse faculties in Queen's University, we are a vibrant community that is home to some of the most innovative and globally significant research and teaching across six schools. With strength in traditional engineering disciplines, the Faculty also brings together diverse topics from Psychology to Geography, and Computer Science and everything in between.

Underpinning all of this is our drive to solve the big challenges that global societies face. Whether that is understanding the human brain, investigating clean energy production or securing our digital future. Our research is leading the world in an environment rooted in the ideals of Athena SWAN where we actively promote Women in Science and Engineering.

Uniquely, we provide the tools for industry and research to meet. Offering a platform to spin out research into commercial opportunities and engage with industry on cutting-edge research with real-world projects. The leadership provided by our academics creates opportunities for all students to satisfy their ambitions through taught and research programmes.

The comfort and security of our modern world is provided by amazing advances in science and technology, focused on improving our lives.

PSYCHOLOGY

The School of Psychology is truly world-leading in both teaching and research output. The School has specialised facilities for human experimental psychology, movement and perception, individual differences, social psychology, child development and psychophysiology. We encourage cross-disciplinary and inter-institutional research collaborations which respond to societal needs nationally and internationally.

RESUS

Study Abroad students have the opportunity to apply to take part in RESUS. The Research Experience Scheme for Undergraduate Students at the School of Psychology, Queen's University Belfast (RESUS) is intended to provide an online framework within which psychology undergraduates can gain valuable experience working on research projects with members of staff here in the school.

SAMPLE PATHWAY

Level 3

PSY3098 Ageing: Mind, Brain and Behaviour

The module covers three major themes in the psychology of ageing; mind, brain, and behaviour. The mind theme introduces cognitive, social, and emotional aspects of ageing. We consider how older adults interact with their social environment and how emotional processing changes with age. The brain theme introduces psychophysiological changes that occur with age. We consider how ageing affects memory and attention and some of the underlying physiology involved. The behaviour theme focuses on sensorimotor control in older age, on how mobility can be compromised with age, and introduces methods for improving mobility in older age.

+

Level 3

PSY3118 Using Nudges to Change Behaviour

Explore the power of a gentle nudge. This module will introduce students to recent theory and practice relating to behaviour change. We examine the psychology of “nudges”, small changes to choice architectures which encourage certain desirable behaviours without making those behaviours mandatory.

+

Level 3

PSY3124 Introduction to Political Psychology

This course aims to introduce you to the field of political psychology. The module will cover different core areas of political psychology such as race and racism, social movements, political extremism, polarization and youth and political violence. Throughout the course, you are expected to develop an understanding of the basic psychological processes underlying our political thoughts and behaviours and apply this information to real life situations.

=TOTAL 15–18 US CREDITS



COMPUTER SCIENCE

Study Computer Science at Queen's and find yourself at the heart of new research centres in Secure Information Technologies, Electronics, Communications and Information Technology and Sonic Arts. The modules available are closely linked to the research expertise of these centres and change rapidly to reflect some of the current, emerging and exciting developments in the field.

At Queen's, we aim to deliver a high quality learning environment that encompasses intellectual curiosity, innovation and best practice in learning, teaching and student support to enable students to achieve their full academic potential.



SAMPLE PATHWAY

Level 3

CSC2062 Artificial Intelligence

This module explores key concepts of artificial intelligence and machine learning. From propositional, predicate, and fuzzy logics to probabilities and descriptive statistics, this module covers an array of algorithms for machine learning and data analysis.

+

Level 3

CSC3065 Cloud Computing

This module covers concepts and technologies related to cloud computing including the design and deployment of highly distributed systems on modern cloud vendor platforms.

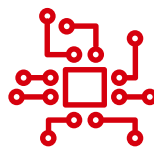
+

Level 3

CSC3059 Malware Analysis

This module introduces malware analysis in virtual machines as well as how to recognise C Code Constructs in assembly. We will study malicious Window programs, malware Taxonomy and even machine learning for malware detection.

=TOTAL 15-18 US CREDITS



**TOP 175 IN THE WORLD FOR
COMPUTER SCIENCE**

(TIMES HIGHER EDUCATION WORLD
UNIVERSITY RANKINGS 2022)

EPS SPOTLIGHT: CIVIC ENGAGEMENT RESEARCH PROJECTS

A UNIQUE OPPORTUNITY FOR
STUDY ABROAD STUDENTS

We are excited to highlight
module EPS 3003:

Civic Engagement Research Projects module, an incredible opportunity for Study Abroad students to contribute to meaningful research that supports civil society organisations.

Students will work individually or in teams on research projects provided by government agencies like Belfast City Council, non-governmental organisations such as Belfast Hills Partnership, and charities including Habitat for Humanity Ireland. These projects are designed to reflect the diverse research expertise of our academic staff across disciplines.

Each research project is determined through collaboration with a Queen's University Belfast academic and civic partner. This multidisciplinary approach ensures that students can apply their knowledge from various subject areas to make a meaningful impact on real-world challenges. Students completing this module will gain hands-on experience and acquire skills in; project design; problem-solving; project management; independent research; team-working; collaboration and networking; self-efficacy; communication and presentation of ideas to a variety of different types of audiences.



Example project:

Habitat for Humanity Ireland

Partner with Us:

Accelerating Change & Making a Lasting Impact on the Environment & Society

Assessment: 100% Portfolio

Habitat for Humanity (HFH) Ireland would like a team of students to research and identify which private and public sector organisations in Northern Ireland have embraced the UN's Sustainable Development Goals (SDGs) and in particular developed related Environmental, Social and Governance (ESG) strategies. HFH Ireland is also interested in better understanding how HFH's programmes align with these ESG strategies. The charity would like recommendations on how to build stronger partnerships with a range of local private and public sector organisations by signposting how HFH's programmes align with local organisations' ESG strategies.

This module offers an invaluable chance to make a real impact while gaining practical research skills in a supportive and collaborative environment.

For more details, reach out to our team: askeps@qub.ac.uk

ARCHAEOLOGY AND PALAEOECOLOGY

Archaeology and Palaeoecology is a vibrant, long-established unit within Queen's University Belfast. With relevance to both Science and Humanities, it lies at the heart of the University; its degree programmes span two Faculties but Archaeology and Palaeoecology can provide temporal depth to practically all disciplines. Archaeology studies the development of humanity by examining people's surviving material remains (tombs and temples, settlements and skeletons, artefacts and environment) and using them to trace our economic, cultural, social and spiritual achievements through time. At Queen's, Palaeoecology complements Archaeology by studying the nature and timing of environmental events in the past, including climate change, while also assessing the impact of human activities on past natural environments.

We are consistently ranked in the Top 100 Archaeology Departments in the QS World University Rankings and lie within the Top 10 Archaeology departments in the major UK league tables. Study Abroad students coming to Archaeology and Palaeoecology at Queen's will have the opportunity to gain practical skills, both in the laboratory and as part of fieldwork projects.



**9TH IN THE UK FOR
STUDENT SATISFACTION**
(COMPLETE UNIVERSITY GUIDE 2024)

SAMPLE PATHWAY

Semester Two: Spring

Level 2

ARP2039 Archaeological Excavation

Through the excavation of an archaeological site in Northern Ireland, this module introduces students to one of the basic methods of acquiring archaeological data and to the field techniques involved. The focus is on developing an understanding of the reasons for the methodology used on the excavation and on providing students with experience in its application. The module involves some classroom-based teaching during term time, but the four-week fieldwork component that is an integral part of this module takes place after the end of Spring term classes, usually in June.

+

Level 2

ARP2045 From St Patrick to the Plantation

The module involves the study of Ireland in the historic period, from the 5th century AD to the 17th century AD, using the physical remains of the past, supported by documentary sources. Topics include Early Medieval crafts and settlements; the impact of the Vikings; the lordships of the Anglo-Normans, Late Medieval Gaelic Ireland, and the Ulster Plantation. The module is taught through lectures and involves a weekend fieldtrip to visit archaeological sites.

+

Level 3

ARP3053 Society, Death and Disease

The module is taught through lectures, practicals and fieldtrips. It focuses on human osteoarchaeology and its contribution to our understanding of life in the past, disease and its impact on past societies, and the study of funerary monuments. Students are introduced to the practical analysis of archaeological human remains and what the osteological and palaeopathological analysis of ancient people can contribute to our understanding of past societies. It also explores the information that can be gained from funerary monuments and, in particular, Post-Medieval grave memorials.

GEOGRAPHY

Geography at Queen's boasts expertise in the local physical and political geography of Ireland as well in the wider dynamics of natural, cultural and economic change. Queen's also has a long and acclaimed tradition of work in historical geography and the geographies of knowledge, as well as cutting-edge expertise in Geographical Information Science (GIS). The programme reflects this diversity, but is united by a shared concern with grasping the magnitude and multi-dimensional character of pressing environmental and social issues, seeking sustainable solutions to these urgent problems. Global in scope, the teaching programme spans the length and breadth of the planet – from the contested territories of Israel/Palestine to the tropical ecosystems of Peru.



SAMPLE PATHWAY

Semester Two: Spring

Level 2

GGY2061 Exploring Dynamic Environments (Mallorca)

Explore the Mediterranean island of Mallorca with this exciting field-based module. We investigate a variety of contrasting landscapes on the island and explore the human and physical dynamics that have shaped them over multiple timescales.

+

Level 3

GGY3066 Geography, Science and Society

This module explores ways of thinking geographically about the production and reception of scientific ideas, particularly in the nineteenth and early twentieth centuries. Among the themes we study are the discovery of the ice age, Darwin and evolution, and the emergence of climate science. We will consider how each episode in history sparked social, cultural and political debates that continue into our own time.

+

Level 3

GGY3095 Environmental Catastrophes

Environmental catastrophes occur when there is a rapid departure from normality and humans and/or ecosystems are unable to adapt. We explore the causes, mechanisms and consequences of a range of geohazards and human-induced catastrophes, including volcanic eruptions, tsunamis and biodiversity loss. We will also consider theoretical constructs such as the Anthropocene, ecosystem resilience, and tipping points in the Earth System.

ARCHITECTURE

Supported by a diverse group of experienced scholars and architects engaged in international, award-winning research and practice, Architecture at Queen's is one of the best places in the UK to immerse yourself in this creative profession.

Our established reputation generated over 50 years means that students are equipped with professional and transferable skills that prepare them for practice. As a design discipline, Architecture at Queen's embraces both artistic and technical qualities. Architecture students study design in a studio environment, contextualized by courses in history/theory, technology/environment and professional practice.

SAMPLE PATHWAY

Study Abroad students coming to Architecture in the School of Natural and Built Environment can select from a wide range of undergraduate courses to learn about buildings, cities and their design, and to gain practical skills. All assessment is 100% coursework; we do not have examinations/tests.



Semester One: Fall

If you are interested in architectural design, we recommend you take the 'full package' that we offer to our undergraduate students in Fall:

Level 1

ARC1024 History and Theory of Architecture I (i)
(10 CATS)

+

ARC1025 Architectural Design and Communication I (i) (40 CATS)

+

ARC1023 Technology and Environmental (i)
(10 CATS)

Alternatively, if you are eager to learn about built and urban environment, the following options are available:

Level 1

ARC1024 History and Theory of Architecture I (i)
(10 CATS)

+

Level 2

ARC2004 History and Theory of Architecture II (i)
(10 CATS)

+

Level 3

ARC4022 History and Theory of Architecture III (i)
(10 CATS)

Semester Two: Spring

For students joining us in Spring, we encourage you to take the following courses:

Level 1

ARC1024 History and Theory of Architecture I (ii)
(10 CATS)

+

Level 2

ARC3022 History and Theory of Architecture II (ii)
(10 CATS)

+

Level 3

ARC3003 History and Theory of Architecture III (ii)
(10 CATS)

CITIES, URBANISATION, THE ENVIRONMENT

Over half of the world's population now live in cities, with numbers expected to double by 2050. While urbanisation poses serious challenges, cities can also be incubators for sustainable development. Drawing upon the research expertise of our staff, at Queen's we offer a variety of opportunities to learn about the trends impacting cities, such as population growth, demographic shifts and the risks posed by climate change, as well as about innovative 'people-centred' models for urban development that aim to 're-humanise cities' on a sustainable trajectory.

8TH IN THE UK FOR ARCHITECTURE

(GUARDIAN UNIVERSITY GUIDE 2023)



SAMPLE PATHWAY

Semester Two: Spring

Level 3

GGY 3063 Spaces of Urbanisation in Emerging Economies

Explore the potential of and prospects for sustainable urban development and its implications for policy analysis in a comparative perspective. Debate key approaches to urban management, consider alternatives and hone your skills in critiquing policy approaches to cities.

+

Level 2

EVP 2009 Planning & Climate Change

Climate change is a colossal global, national and local challenge for politicians, policy makers and planners. It raises hugely important questions in terms of how we inhabit the Earth, how we organise our economies, how we use natural resources, how we travel, and how we plan our cities, towns and villages. In this module we will explore how, individually and collectively, we can meet the challenge of climate change, the barriers that impede effective responses and means to overcome these barriers.

+

Level 3

EVP 3004 Conservation of the Built Environment

Planning is about managing urban change and conserving the character of places. In this module, you will be working on live projects to help local communities devise ideas to regenerate their historic areas. You will complete field studies, research best practice and be part of progressive placemaking.



UNIQUELY PLACED TO TACKLE THE ENVIRONMENTAL AND CULTURAL CHALLENGES FACING US IN THE 21ST CENTURY

CIVIL, STRUCTURAL (WITH ARCHITECTURE) AND ENVIRONMENTAL ENGINEERING

Civil Engineering is one of the founding degrees at Queen's and it remains one of the most sought-after careers providing our students with the tools to solve the challenges facing our modern society.

Our modules are delivered by a diverse group of experienced academics and practitioners who are engaged in international and award winning knowledge transfer and research projects that are shaping our sustainable future. Our established reputation provides our students with professional and transferable engineering skills that make the world a better place. For this reason, Queen's Civil Engineers are in demand globally and our former graduates have risen to the top of this profession, such as Peter Rice, the Structural Engineer for the Sydney Opera House and the Louvre Pyramid, and Tan Sri Datuk Chin Fung Kee who led the design and construction of the Penang Bridge.

Civil Engineering is a broad discipline that incorporates our cities, rivers, roads, rail, bridges and ports, our water supply and treatment, our air quality, our energy resources, including wind and marine renewables. The development and safe maintenance of our civil infrastructure aligns to the ambitions of the United Nations' Sustainable Development Goals (SDGs) in particular Sustainable Cities and Communities. Hence, our degree programmes are concerned with the sustainable planning, design, construction, management and the safe maintenance of this infrastructure, energy and water.

You will have the opportunity to tailor your studies according to your skills and interest within our three complementary pathway programmes:

- Civil Engineering
- Environmental and Civil Engineering
- Structural Engineering with Architecture

SAMPLE PATHWAY

Study Abroad students coming into Civil Engineering can select from a range of undergraduate courses to learn about the design and the core disciplines that form the backbone of our accredited degrees. We recommend you follow one of the three pathways that we offer to our undergraduate students.

Some example modules:

Semester One: Fall

Level 1

CIV1019 Engineering Drawing and Design 1 (10CATS)

+

Level 2

CIV2053 Engineering Geology 2 (10CATS)

+

Level 3

CIV3005 Civil Engineering for the Changing Environment (10CATS)

+

Level 4

CIV4001 Construction

Management 4 (10CATS)

CIV4009 Bridge Engineering (10CATS)

Semester Two: Spring

Level 1

CIV1008 Fluids 1 (10CATS)

+

Level 2

CIV2022 Architectural Design Studies 2 (20CATS)

+

Level 3

CIV3005 Civil Engineering for the Changing Environment (10CATS)

+

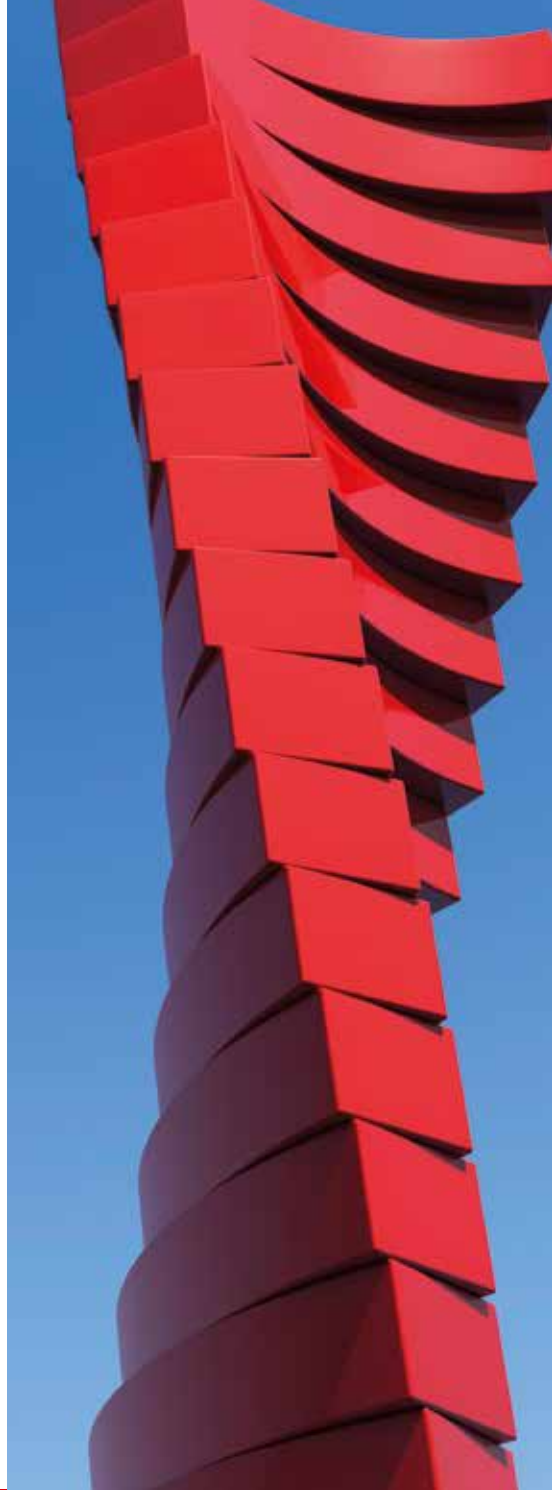
Level 4

CIV4042 Durability and Whole Life Management of Structures (10CATS)

CIV4017 Hydrogeology 1 (10CATS)

However, you choose your modules, you will be tackling some of the most significant challenges of the modern world, such as achieving sustainable and safe living in an increasingly urbanised society. As the demands on resources like water, energy and land increase, there is a strong need for qualified Civil Engineers with the relevant technical skills who can positively impact on ethical awareness and the environmental impact of their projects.

"Scientists investigate that which already is; Engineers create that which has never been." Albert Einstein



CLIMATE CHANGE, POLITICS, ENVIRONMENTAL SCIENCE

High temperatures, long and intense heatwaves, droughts, forest fires and floods are just a few of the hallmarks of contemporary climate change. Learn to evaluate and analyse environmental change research critically and reflect on the strengths, weaknesses and potential societal implications of the scientific evidence. Understand the evidence needed for policymakers and society to respond to its regional and global impact.

SAMPLE PATHWAY

Semester One: Fall

Level 2

GGY2058 Global Environmental Change

This module focuses on the causes and consequences of past, present and future environmental change. The role of humans in changing the Earth's environment will be central and will be placed in the context of past environmental change and natural variability.

+

Level 3

GGY3073 Climate Change

Climate change is one of the most pressing and challenging issues facing humanity. We explore the complex myriad of issues connected with this fundamental crisis, ranging from the physical scientific basis to the human response in adapting to and mitigating climate change at the international and individual level.

+

Level 3

GGY3084 Environmental Geopolitics

Since the end of the Cold War, environmental issues have become one of the most important considerations in global politics. Explore the debates that have configured our understanding of the Anthropocene, drawing upon insights from Geography, International Relations and Environmental Politics. Explore the relationship between environmental changes and conflict; capitalism and climate change; industrial development and indigenous populations; resource scarcity; and the relevance of environmental security to national security, migration and environmental catastrophe.





THE FACULTY
OF **MEDICINE,**
HEALTH AND
LIFE SCIENCES

ENHANCE YOUR CAREER

STUDYING MEDICINE, HEALTH AND LIFE SCIENCES AT QUEEN'S

The Faculty of Medicine, Health and Life Sciences at Queen's University Belfast is recognised internationally for world-class excellence and ground breaking research.

We are home to over 7,600 students and 1,200 academic and support staff who work across the four Schools:

- **Biological Sciences**
- **Medicine, Dentistry and Biomedical Sciences**
- **Nursing and Midwifery**
- **Pharmacy**

Through our education and research, we strive to address some of the world's greatest challenges in health, food and environment. Our academic staff undertake world-leading research through our interdisciplinary Global Research Institutes in Health Sciences and Global Food Security, and Pioneer Research Programmes which bring researchers together to tackle some of the greatest global challenges of our age.

We are working to ensure a healthy global population, and an inclusive, secure and enriched society. Tackling the familiar problems of disease, the new challenges of the digital age and safe, sustainable food chains.

Our hope is that students from around the world will join with us to both learn and also bring new ideas and approaches to help drive forward our ambitions to enhance and advance life the field of life sciences.



(QS WORLD UNIVERSITY RANKINGS 2024)

TOP 100

- **Nursing – 51-100**

TOP 200

- **Medicine – 151 – 200**
- **Pharmacy – 35**

UK RANKINGS

(Times and Sunday Times Good University Guide 2024)

- **1st in the UK for Agriculture and Forestry**
- **7th in the UK for Dentistry**
- **2nd in the UK for Pharmacy and Pharmacology**
- **3rd in the UK for Food Science**
- **8th in the UK for Medicine**

BIOLOGICAL SCIENCES

The School of Biological Sciences aims to enhance the way we use technology in research, food security, microbiology, ecosystem biology, sustainability and many other related areas. The School has UK-leading undergraduate programmes in areas such as agriculture and food science as well as world-class Biological Sciences research capabilities.

Providing the very best learning experiences and environment within the School, students benefit from our new £40m School building featuring state-of-the-art teaching, research and laboratory facilities.

Students will gain practical laboratory skills to help them investigate and manipulate biological material, including relevant physical, chemical and biological measurements and their application in a laboratory setting. Additional skills development opportunities include; collation, quantitative analysis and interpretation of experimental data, including problem-solving, communication and application of knowledge.

AVAILABLE STUDY ABROAD MODULES

BIO3207 Global Issues in Agriculture

Spring Semester

BIO1313 Composition of Foods

Spring Semester

BIO3208 Advances in Crop and Animal Science and Technology

Spring Semester

BIO2204 Introduction to Environmental Economics

Spring Semester

BIO1301 World of Microorganisms

Spring Semester

BIO2203 Invertebrate Biology

Spring Semester

BIO2201 Industrial Food Analysis

Spring Semester

BIO2205 Applied Genetics

Spring Semester

MEDICINE, DENTISTRY AND BIOMEDICAL SCIENCE

Founded in 1835, the School of Medicine, Dentistry and Biomedical Sciences are proud to be one of the longest established medical schools in the UK.

Undergraduate programmes are offered in four key subject areas; Medicine, Dentistry, Biomedical Sciences and Human Biology. Patient focused learning and practice, combined with research and laboratory experiences, are important components of the curriculum.

The school is renowned for its world-class facilities, world-class staff and a world-class intake to our programmes every year. They put future thinking at the heart of everything they do and are constantly investing in new ideas and technologies that will make a difference.

Queen's is one of a few UK Medical Schools that offer cadaveric full-body dissection. In addition, medical students get the opportunity to interact with patients in the largest Health and Social Care Trust in Europe and in community based general practices across Northern Ireland.

The city provides countless opportunities for fun things to do without feeling like an overwhelmingly large city. The modules I am taking here are interesting and exciting so far, and one includes a field project over Easter Break, which is an experience I am looking forward to and could not get at my home university.

Alexander Lyon
Study Abroad Student

SAMPLE STUDY ABROAD MODULES

Level 2

BMS2105 Human Evolution

Spring Semester

BMS2015 Molecular Cell Biology

Spring Semester



PHARMACEUTICAL SCIENCES

The School of Pharmacy at Queen's University Belfast is currently ranked 4th in the Times and Sunday Times University Guide 2025.

The School offers students an exceptional opportunity to take classes which will equip students for careers in the growing global pharmaceuticals industry.

Students also benefit from being taught by research active academic staff who are leading experts in their field. For students, this means that they will get the latest insights and knowledge in the industry to help prepare them for their future career.

SAMPLE STUDY ABROAD MODULES

Level 1

PMY1021 Pharmaceutical and Applied Microbiology
Spring Semester



**PHARMACY IS 4TH IN THE TIMES
AND SUNDAY TIMES GOOD
UNIVERSITY GUIDE 2025.**



MEET OUR STAFF

The Faculty of Medicine, Health and Life Sciences at Queen's University Belfast is globally recognised for world-class excellence and ground breaking research.

Dr Lisa Connolly

Dr Connolly is a Lecturer of Food Toxin Safety at The Institute of Global Food Security in Queen's. She is currently leading a vital research programme focusing on whether natural toxins or manmade chemicals create a dangerous mixture that can affect hormones and cause illnesses such as cancer, obesity, diabetes and infertility. Lisa and her team primarily utilise in vitro bioassays for the screening of endocrine disruptors in food and feed and assessing their adverse biological effects. She has been involved in many projects involving complementary national and international expertise including a project to identify levels of hormone contamination in sport supplements.



Professor Usha Chakravarthy

When academics at Queen's talk about making a global impact, they may well have people like Usha Chakravarthy in mind. In addition to her role as Professor of Ophthalmology and Vision Sciences for the University and the Royal Victoria Hospital, she is also Chair of the Ophthalmology Group for the UK Clinical Research Network. Recently in Seattle, she introduced a discussion on her most recent major project: the IVAN trial: A funded clinical trial which she conducted over four years into treatment for wet AMD – age-related macular degeneration – involving more than 600 patients in 23 UK hospitals. The research concluded that use of the drug Avastin was as effective a treatment as the more expensive option Lucentis, paving the way for an estimated saving to the UK's National Health Service (NHS) of £84m a year.



INCLUSION AND WELLBEING SERVICES



**MAKE THE MOST OF YOUR TIME
AT QUEEN'S
BY JOINING ONE OF OUR
215 PLUS CLUBS AND SOCIETIES**

Supporting Students

There's a buzz happening around campus... and the focus is all on One Elmwood, our new Student Centre and Students' Union. It houses both the Students' Union and University Student Support Services, in one purpose-built facility to give students better access to a range of services and opportunities all in one building.

Located at the heart of campus and with a rooftop terrace overlooking the University area, the brand-new, state-of-the-art building brings together student services with a range of facilities so students can access services, collaborate in shared spaces, get support and advice, and socialise in first-class venues.

This vibrant new hub means students can get the support they need, when they need it.

The Student Wellbeing Service offers a comprehensive range of support services which are flexible and responsive to

individual needs. One-to-one appointments, drop-in services and professional counselling services are all available to all students at no additional cost.

The Students' Union

The Student's Union is a hive of student-led activity situated at the heart of Queen's campus. Study Abroad students can get involved in over 220 different clubs and societies, meeting lots of new people in the process! We have everything from surf and equestrian clubs to origami and Quidditch! Many different campaigns take place throughout the year including Mental Health Awareness weeks.

Prioritising Gender Equality

Queen's is a lead UK university in tackling the unequal representation of women in science and engineering. Queen's University Belfast has been awarded a prestigious Gold Athena Swan Award, conferred in January 2024 by Advance HE. We are the first university on the island of Ireland and only the second in the UK to achieve an institutional Gold Award for work improving gender equality.

Diversity and Inclusion

Queen's is committed to promoting equality of opportunity and to celebrating the diversity of our student body. Our Diversity and Inclusion Unit actively works to develop and support the implementation of policies and procedures that promote equality and diversity on campus.



ONE ELMWOOD STUDENT CENTRE AND STUDENTS' UNION

The new state-of-the-art building brings together student services with the Students' Union and a range of facilities so students can access services, collaborate in shared spaces, get support and advice, and socialise in first class venues. Everything you need is in one place.

It provides a whole new exciting space to catch up with friends, study in a tech-friendly space, grab lunch from the SU Shop, enjoy a pint in the Union Bar, or take in a gig in the brand new Mandela Hall.

The Norman Houston Study Northern Ireland Award



This award has been created in memory of the late Norman Houston, friend of Queen's and former Director of the Northern Ireland Bureau in the USA.



**QUEEN'S
UNIVERSITY
BELFAST**

During his tenure leading the diplomatic mission to North America, Mr Houston was a respected and admired diplomat. An advocate of Queen's, he supported a wide range of youth development and leadership programmes.

We remember Norman Houston through 'The Norman Houston- Study Northern Ireland Award'.

We are committed to widening participation in international education opportunities. This award has been created in partnership with the Northern Ireland Bureau for students from the USA who require financial assistance.

One award will be provided each academic year for an exceptional visiting (study abroad) student from the USA. The award package includes:

- Semester tuition fee-waiver
- University accommodation
- Return flight from USA to Belfast
- A return airport transfer to/from the University halls of residence

For more information <http://go.qub.ac.uk/normanhoustonaward>

WHAT'S NEXT?



VISIT OUR DEDICATED WEBSITE

Our website for Study Abroad students will provide you with more information on the application process, fees and funding, life in Belfast and much more. qub.ac.uk/studyabroad

GET IN TOUCH

Contact a member of our team directly with any questions or queries you may have.

General Study Abroad Queries:

Email: studyabroad@qub.ac.uk





GETTING HERE

BY SEA

Fast ferry services including Stena Line and P&O Ferries make multiple daily crossings from Northern Ireland to ports in Scotland and England.

BY AIR

Belfast is served by two airports:

George Best Belfast City Airport and Belfast International Airport which are both linked to the city by regular bus services.

Dublin International Airport is located approximately 100 miles to the south. Belfast, as the capital of Northern Ireland, is connected to the rest of the UK, Ireland and Europe by sea, road, and air.



**QUEEN'S
UNIVERSITY
BELFAST**





**QUEEN'S
UNIVERSITY
BELFAST**





**QUEEN'S
UNIVERSITY
BELFAST**

qub.ac.uk/studyabroad



@QUBelfast

#lovequb